

1 - Paramètres

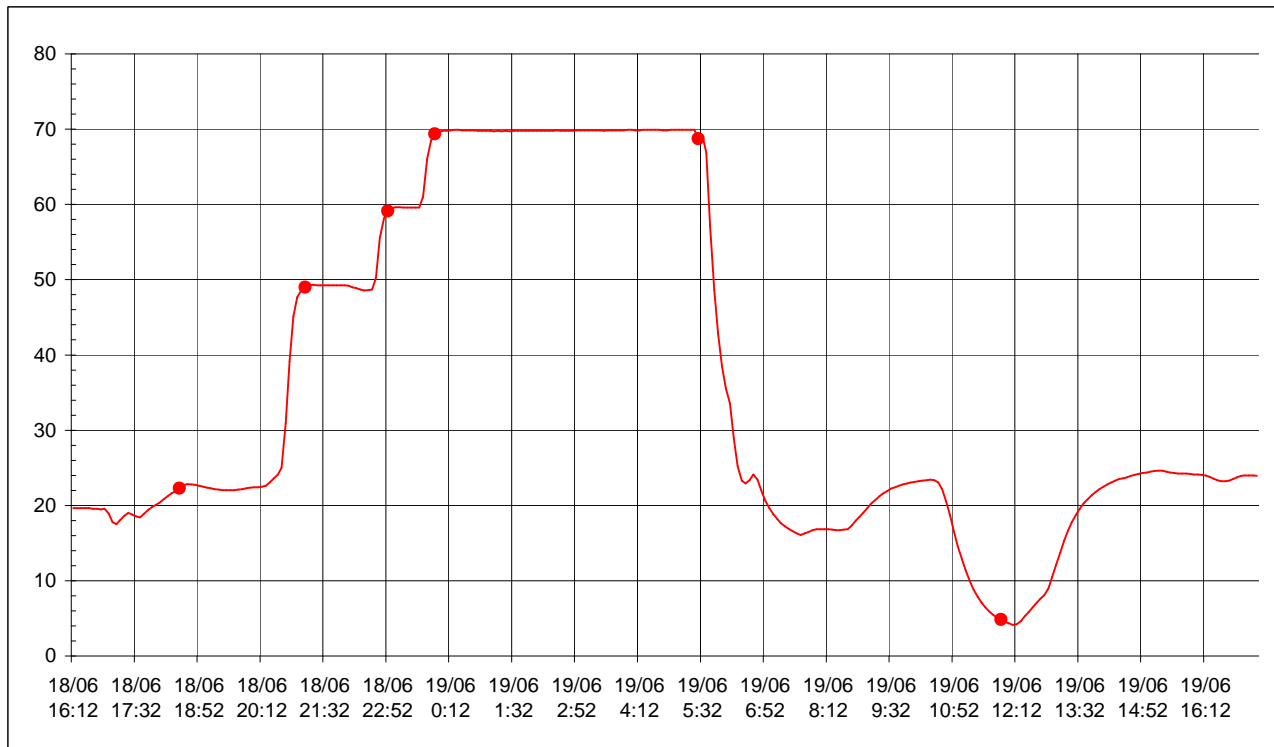
Date du Contrôle : 14/06/2007 16:37:01 Opérateur : JP
 Matériel Contrôlé : LT à piquer
 Nombre d'enregistreurs : 1
 Intervalle de mesure : 00:05:00
 Unité : °C

Remarques : Test de validation de procédé, cycle cuisson jambon blanc. Sonde à piquer à coeur.

2 - Instruments de Mesure Utilisés

| | Id. Interne | Id. Unique Constructeur | Position | Remarque | Date Etalonnage | Modèle | Incertitude Retenue |
|---|-------------|-------------------------|--------------|----------|-----------------|--------|---------------------|
| 1 | | 0000000378E741 | FM intérieur | | 21/05/2007 | LT-Ext | 0.12 |
| 2 | | | | | | | |
| 3 | | | | | | | |

| Sens | | Valeurs de Seuil | Date / Heure | Durée / Seuil Précédent | Durée / Départ Cycle |
|------|---------|------------------|---------------|-------------------------|----------------------|
| | Départ | | 18/6 16:12:01 | | |
| V | Seuil 1 | 22 | 18/6 18:27:01 | 2:15:00 | 2:15:00 |
| V | Seuil 2 | 49 | 18/6 21:07:01 | 2:40:00 | 4:55:00 |
| V | Seuil 3 | 59 | 18/6 22:52:01 | 1:45:00 | 6:40:00 |
| V | Seuil 4 | 69 | 18/6 23:52:01 | 1:00:00 | 7:40:00 |
| ^ | Seuil 5 | 69 | 19/6 5:27:01 | 5:35:00 | 13:15:00 |
| ^ | Seuil 6 | 5 | 19/6 11:52:01 | 6:25:00 | 19:40:00 |
| | Fin | | 19/6 17:17:01 | | |



7 - Liste des Mesures

| | Heure | FM intérieur | | | | | | |
|---|---------------|--------------|--|--|--|--|--|--|
| D | 18/6 16:12:01 | 19.63 | | | | | | |
| | 18/6 16:17:01 | 19.63 | | | | | | |
| | 18/6 16:22:01 | 19.63 | | | | | | |
| | 18/6 16:27:01 | 19.63 | | | | | | |
| | 18/6 16:32:01 | 19.63 | | | | | | |
| | 18/6 16:37:01 | 19.57 | | | | | | |
| | 18/6 16:42:01 | 19.57 | | | | | | |
| | 18/6 16:47:01 | 19.5 | | | | | | |
| | 18/6 16:52:01 | 19.57 | | | | | | |
| | 18/6 16:57:01 | 18.93 | | | | | | |
| | 18/6 17:02:01 | 17.79 | | | | | | |
| | 18/6 17:07:01 | 17.54 | | | | | | |
| | 18/6 17:12:01 | 18.11 | | | | | | |
| | 18/6 17:17:01 | 18.62 | | | | | | |
| | 18/6 17:22:01 | 19 | | | | | | |
| | 18/6 17:27:01 | 18.81 | | | | | | |
| | 18/6 17:32:01 | 18.55 | | | | | | |
| | 18/6 17:37:01 | 18.43 | | | | | | |
| | 18/6 17:42:01 | 18.87 | | | | | | |
| | 18/6 17:47:01 | 19.38 | | | | | | |
| | 18/6 17:52:01 | 19.76 | | | | | | |
| | 18/6 17:57:01 | 20.08 | | | | | | |
| | 18/6 18:02:01 | 20.39 | | | | | | |
| | 18/6 18:07:01 | 20.84 | | | | | | |
| | 18/6 18:12:01 | 21.22 | | | | | | |
| | 18/6 18:17:01 | 21.6 | | | | | | |
| | 18/6 18:22:01 | 21.91 | | | | | | |
| | 18/6 18:27:01 | 22.29 | | | | | | |
| | 18/6 18:32:01 | 22.67 | | | | | | |
| | 18/6 18:37:01 | 22.86 | | | | | | |
| | 18/6 18:42:01 | 22.8 | | | | | | |
| | 18/6 18:47:01 | 22.74 | | | | | | |
| | 18/6 18:52:01 | 22.61 | | | | | | |
| | 18/6 18:57:01 | 22.48 | | | | | | |
| | 18/6 19:02:01 | 22.36 | | | | | | |
| | 18/6 19:07:01 | 22.29 | | | | | | |
| | 18/6 19:12:01 | 22.17 | | | | | | |
| | 18/6 19:17:01 | 22.1 | | | | | | |
| | 18/6 19:22:01 | 22.04 | | | | | | |
| | 18/6 19:27:01 | 22.04 | | | | | | |
| | 18/6 19:32:01 | 22.04 | | | | | | |
| | 18/6 19:37:01 | 22.04 | | | | | | |
| | 18/6 19:42:01 | 22.1 | | | | | | |
| | 18/6 19:47:01 | 22.17 | | | | | | |
| | 18/6 19:52:01 | 22.29 | | | | | | |
| | 18/6 19:57:01 | 22.36 | | | | | | |
| | 18/6 20:02:01 | 22.42 | | | | | | |
| | 18/6 20:07:01 | 22.42 | | | | | | |
| | 18/6 20:12:01 | 22.48 | | | | | | |
| | 18/6 20:17:01 | 22.61 | | | | | | |
| | 18/6 20:22:01 | 23.05 | | | | | | |
| | 18/6 20:27:01 | 23.62 | | | | | | |
| | 18/6 20:32:01 | 24.07 | | | | | | |
| | 18/6 20:37:01 | 25.02 | | | | | | |
| | 18/6 20:42:01 | 30.9 | | | | | | |
| | 18/6 20:47:01 | 39.12 | | | | | | |
| | 18/6 20:52:01 | 45.11 | | | | | | |
| | 18/6 20:57:01 | 47.69 | | | | | | |
| | 18/6 21:02:01 | 48.63 | | | | | | |
| | 18/6 21:07:01 | 49.01 | | | | | | |
| | 18/6 21:12:01 | 49.2 | | | | | | |
| | 18/6 21:17:01 | 49.33 | | | | | | |
| | 18/6 21:22:01 | 49.26 | | | | | | |
| | 18/6 21:27:01 | 49.26 | | | | | | |
| | 18/6 21:32:01 | 49.26 | | | | | | |
| | 18/6 21:37:01 | 49.26 | | | | | | |
| | 18/6 21:42:01 | 49.26 | | | | | | |
| | 18/6 21:47:01 | 49.26 | | | | | | |
| | 18/6 21:52:01 | 49.26 | | | | | | |
| | 18/6 21:57:01 | 49.26 | | | | | | |
| | 18/6 22:02:01 | 49.2 | | | | | | |
| | 18/6 22:07:01 | 49.01 | | | | | | |
| | 18/6 22:12:01 | 48.88 | | | | | | |
| | 18/6 22:17:01 | 48.7 | | | | | | |
| | 18/6 22:22:01 | 48.57 | | | | | | |
| | 18/6 22:27:01 | 48.63 | | | | | | |

| | |
|---------------|-------|
| 18/6 22:32:01 | 48.7 |
| 18/6 22:37:01 | 50.27 |
| 18/6 22:42:01 | 55.55 |
| 18/6 22:47:01 | 58.13 |
| 18/6 22:52:01 | 59.13 |
| 18/6 22:57:01 | 59.51 |
| 18/6 23:02:01 | 59.63 |
| 18/6 23:07:01 | 59.63 |
| 18/6 23:12:01 | 59.57 |
| 18/6 23:17:01 | 59.57 |
| 18/6 23:22:01 | 59.57 |
| 18/6 23:27:01 | 59.57 |
| 18/6 23:32:01 | 59.57 |
| 18/6 23:37:01 | 61.01 |
| 18/6 23:42:01 | 66.03 |
| 18/6 23:47:01 | 68.47 |
| 18/6 23:52:01 | 69.35 |
| 18/6 23:57:01 | 69.66 |
| 19/6 0:02:01 | 69.79 |
| 19/6 0:07:01 | 69.79 |
| 19/6 0:12:01 | 69.85 |
| 19/6 0:17:01 | 69.91 |
| 19/6 0:22:01 | 69.91 |
| 19/6 0:27:01 | 69.85 |
| 19/6 0:32:01 | 69.85 |
| 19/6 0:37:01 | 69.85 |
| 19/6 0:42:01 | 69.85 |
| 19/6 0:47:01 | 69.79 |
| 19/6 0:52:01 | 69.79 |
| 19/6 0:57:01 | 69.79 |
| 19/6 1:02:01 | 69.79 |
| 19/6 1:07:01 | 69.72 |
| 19/6 1:12:01 | 69.79 |
| 19/6 1:17:01 | 69.72 |
| 19/6 1:22:01 | 69.79 |
| 19/6 1:27:01 | 69.72 |
| 19/6 1:32:01 | 69.79 |
| 19/6 1:37:01 | 69.79 |
| 19/6 1:42:01 | 69.79 |
| 19/6 1:47:01 | 69.79 |
| 19/6 1:52:01 | 69.79 |
| 19/6 1:57:01 | 69.79 |
| 19/6 2:02:01 | 69.79 |
| 19/6 2:07:01 | 69.79 |
| 19/6 2:12:01 | 69.79 |
| 19/6 2:17:01 | 69.79 |
| 19/6 2:22:01 | 69.79 |
| 19/6 2:27:01 | 69.85 |
| 19/6 2:32:01 | 69.79 |
| 19/6 2:37:01 | 69.79 |
| 19/6 2:42:01 | 69.79 |
| 19/6 2:47:01 | 69.79 |
| 19/6 2:52:01 | 69.85 |
| 19/6 2:57:01 | 69.85 |
| 19/6 3:02:01 | 69.85 |
| 19/6 3:07:01 | 69.85 |
| 19/6 3:12:01 | 69.85 |
| 19/6 3:17:01 | 69.85 |
| 19/6 3:22:01 | 69.85 |
| 19/6 3:27:01 | 69.79 |
| 19/6 3:32:01 | 69.85 |
| 19/6 3:37:01 | 69.85 |
| 19/6 3:42:01 | 69.85 |
| 19/6 3:47:01 | 69.85 |
| 19/6 3:52:01 | 69.85 |
| 19/6 3:57:01 | 69.91 |
| 19/6 4:02:01 | 69.91 |
| 19/6 4:07:01 | 69.85 |
| 19/6 4:12:01 | 69.85 |
| 19/6 4:17:01 | 69.91 |
| 19/6 4:22:01 | 69.91 |
| 19/6 4:27:01 | 69.91 |
| 19/6 4:32:01 | 69.91 |
| 19/6 4:37:01 | 69.91 |
| 19/6 4:42:01 | 69.85 |
| 19/6 4:47:01 | 69.85 |
| 19/6 4:52:01 | 69.91 |
| 19/6 4:57:01 | 69.91 |
| 19/6 5:02:01 | 69.91 |
| 19/6 5:07:01 | 69.91 |
| 19/6 5:12:01 | 69.91 |
| 19/6 5:17:01 | 69.91 |
| 19/6 5:22:01 | 69.91 |

| | |
|---------------|-------|
| 19/6 5:27:01 | 68.72 |
| 19/6 5:32:01 | 69.16 |
| 19/6 5:37:01 | 66.91 |
| 19/6 5:42:01 | 57.06 |
| 19/6 5:47:01 | 48.63 |
| 19/6 5:52:01 | 42.77 |
| 19/6 5:57:01 | 38.55 |
| 19/6 6:02:01 | 35.58 |
| 19/6 6:07:01 | 33.56 |
| 19/6 6:12:01 | 28.94 |
| 19/6 6:17:01 | 25.21 |
| 19/6 6:22:01 | 23.31 |
| 19/6 6:27:01 | 22.93 |
| 19/6 6:32:01 | 23.37 |
| 19/6 6:37:01 | 24.13 |
| 19/6 6:42:01 | 23.43 |
| 19/6 6:47:01 | 21.98 |
| 19/6 6:52:01 | 20.65 |
| 19/6 6:57:01 | 19.63 |
| 19/6 7:02:01 | 18.87 |
| 19/6 7:07:01 | 18.24 |
| 19/6 7:12:01 | 17.66 |
| 19/6 7:17:01 | 17.22 |
| 19/6 7:22:01 | 16.9 |
| 19/6 7:27:01 | 16.59 |
| 19/6 7:32:01 | 16.27 |
| 19/6 7:37:01 | 16.08 |
| 19/6 7:42:01 | 16.27 |
| 19/6 7:47:01 | 16.46 |
| 19/6 7:52:01 | 16.71 |
| 19/6 7:57:01 | 16.84 |
| 19/6 8:02:01 | 16.84 |
| 19/6 8:07:01 | 16.84 |
| 19/6 8:12:01 | 16.84 |
| 19/6 8:17:01 | 16.78 |
| 19/6 8:22:01 | 16.71 |
| 19/6 8:27:01 | 16.71 |
| 19/6 8:32:01 | 16.78 |
| 19/6 8:37:01 | 16.84 |
| 19/6 8:42:01 | 17.35 |
| 19/6 8:47:01 | 17.98 |
| 19/6 8:52:01 | 18.49 |
| 19/6 8:57:01 | 19.06 |
| 19/6 9:02:01 | 19.69 |
| 19/6 9:07:01 | 20.27 |
| 19/6 9:12:01 | 20.71 |
| 19/6 9:17:01 | 21.22 |
| 19/6 9:22:01 | 21.6 |
| 19/6 9:27:01 | 21.91 |
| 19/6 9:32:01 | 22.23 |
| 19/6 9:37:01 | 22.42 |
| 19/6 9:42:01 | 22.61 |
| 19/6 9:47:01 | 22.8 |
| 19/6 9:52:01 | 22.93 |
| 19/6 9:57:01 | 23.05 |
| 19/6 10:02:01 | 23.12 |
| 19/6 10:07:01 | 23.24 |
| 19/6 10:12:01 | 23.31 |
| 19/6 10:17:01 | 23.37 |
| 19/6 10:22:01 | 23.43 |
| 19/6 10:27:01 | 23.37 |
| 19/6 10:32:01 | 23.05 |
| 19/6 10:37:01 | 22.17 |
| 19/6 10:42:01 | 20.58 |
| 19/6 10:47:01 | 18.62 |
| 19/6 10:52:01 | 16.52 |
| 19/6 10:57:01 | 14.55 |
| 19/6 11:02:01 | 12.84 |
| 19/6 11:07:01 | 11.31 |
| 19/6 11:12:01 | 9.98 |
| 19/6 11:17:01 | 8.83 |
| 19/6 11:22:01 | 7.88 |
| 19/6 11:27:01 | 7.12 |
| 19/6 11:32:01 | 6.48 |
| 19/6 11:37:01 | 5.91 |
| 19/6 11:42:01 | 5.46 |
| 19/6 11:47:01 | 5.08 |
| 19/6 11:52:01 | 4.83 |
| 19/6 11:57:01 | 4.51 |
| 19/6 12:02:01 | 4.32 |
| 19/6 12:07:01 | 4.12 |
| 19/6 12:12:01 | 4.19 |
| 19/6 12:17:01 | 4.63 |

| | |
|---------------|-------|
| 19/6 12:22:01 | 5.27 |
| 19/6 12:27:01 | 5.84 |
| 19/6 12:32:01 | 6.48 |
| 19/6 12:37:01 | 7.05 |
| 19/6 12:42:01 | 7.63 |
| 19/6 12:47:01 | 8.07 |
| 19/6 12:52:01 | 8.96 |
| 19/6 12:57:01 | 10.55 |
| 19/6 13:02:01 | 12.14 |
| 19/6 13:07:01 | 13.73 |
| 19/6 13:12:01 | 15.32 |
| 19/6 13:17:01 | 16.65 |
| 19/6 13:22:01 | 17.79 |
| 19/6 13:27:01 | 18.74 |
| 19/6 13:32:01 | 19.57 |
| 19/6 13:37:01 | 20.27 |
| 19/6 13:42:01 | 20.84 |
| 19/6 13:47:01 | 21.34 |
| 19/6 13:52:01 | 21.79 |
| 19/6 13:57:01 | 22.17 |
| 19/6 14:02:01 | 22.48 |
| 19/6 14:07:01 | 22.8 |
| 19/6 14:12:01 | 23.05 |
| 19/6 14:17:01 | 23.31 |
| 19/6 14:22:01 | 23.5 |
| 19/6 14:27:01 | 23.62 |
| 19/6 14:32:01 | 23.75 |
| 19/6 14:37:01 | 23.94 |
| 19/6 14:42:01 | 24.07 |
| 19/6 14:47:01 | 24.19 |
| 19/6 14:52:01 | 24.32 |
| 19/6 14:57:01 | 24.38 |
| 19/6 15:02:01 | 24.51 |
| 19/6 15:07:01 | 24.57 |
| 19/6 15:12:01 | 24.64 |
| 19/6 15:17:01 | 24.64 |
| 19/6 15:22:01 | 24.51 |
| 19/6 15:27:01 | 24.38 |
| 19/6 15:32:01 | 24.32 |
| 19/6 15:37:01 | 24.26 |
| 19/6 15:42:01 | 24.26 |
| 19/6 15:47:01 | 24.26 |
| 19/6 15:52:01 | 24.19 |
| 19/6 15:57:01 | 24.13 |
| 19/6 16:02:01 | 24.13 |
| 19/6 16:07:01 | 24.07 |
| 19/6 16:12:01 | 24 |
| 19/6 16:17:01 | 23.81 |
| 19/6 16:22:01 | 23.56 |
| 19/6 16:27:01 | 23.37 |
| 19/6 16:32:01 | 23.24 |
| 19/6 16:37:01 | 23.24 |
| 19/6 16:42:01 | 23.31 |
| 19/6 16:47:01 | 23.5 |
| 19/6 16:52:01 | 23.75 |
| 19/6 16:57:01 | 23.94 |
| 19/6 17:02:01 | 24 |
| 19/6 17:07:01 | 24 |
| 19/6 17:12:01 | 24 |
| 19/6 17:17:01 | 23.94 |

F